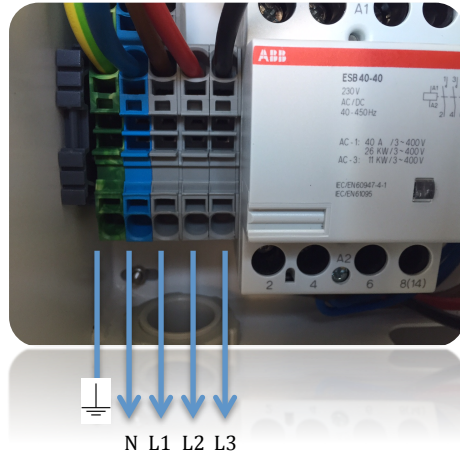


**The Nexxtender is compatible with all electric network configuration  
(only application for wallbox single and dual)**



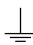
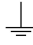
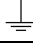
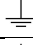
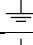
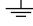
Number of phase		N	L1	L2	L3	
1 Ph + N		N	L1			Figure 1
3 Ph + N		N	L1	L2	L3	Figure 2
3 * 220 ( triangle)		L1	L2			Figure 3
3 * 220 ( triangle) (with one phase to ground)		L1	L2			Figure 3
3 * 220 ( triangle) (with neutral to ground)		L1	L2			Figure 3



Figure 1

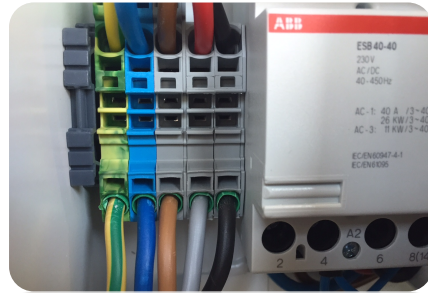


Figure 2

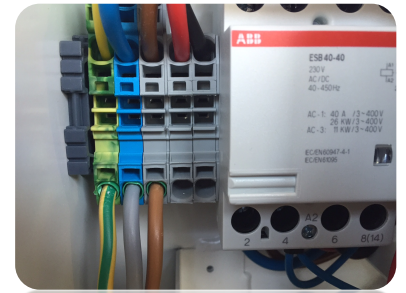


Figure 3